

ROBERTSON GARDENS

# CONFERENCE & MEETING PACKAGES



07 3875 1999/ 0417 649 790  
functions@robertsongardens.com.au  
281 Kessels Road, Nathan QLD 4111

# GREEN OPEN SPACES

## ROBERTSON GARDENS

Only 15 minutes south of Brisbane CBD, set on 10 acres of landscaped native gardens and conveniently located near Griffith University, QSAC Stadium and QE11 Hospital.

Our corporate function venue offers several versatile conference rooms available to hire.

With 138 hotel and apartment style accommodation we have the ability to support conferencing over several days with ease.

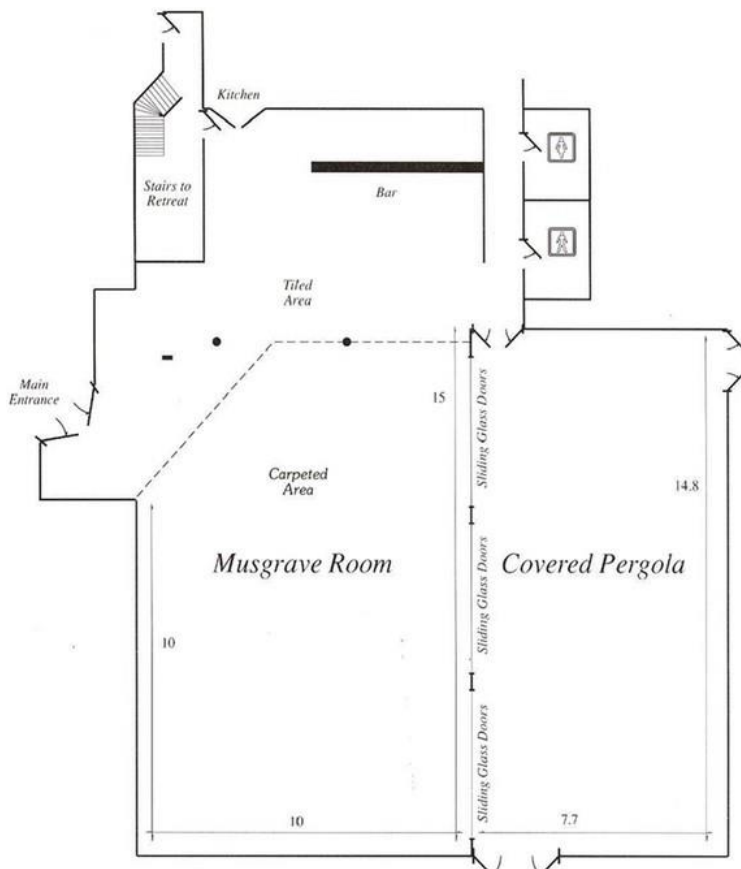
Our extensive catering menu will ensure everything, from tea and coffee on arrival to post-conference cocktails are taken care of.



# CONFERENCE ROOMS

Popular for larger gatherings, the Musgrave Room with its wonderful cathedral ceiling is also accompanied by an exclusive bar and full catering facilities. The curtains can open to amazing natural lighting if desired.

An additional soundproof annex alongside the main function room opens to a private courtyard garden which is the perfect space for event drinks, networking, and socialising.



## MUSGRAVE ROOM

Room Size: 167m<sup>2</sup>

Ceiling Height: Cathedral

Capacity:

Classroom - 72 pax

Theatre - 150 pax

U - Shape - 34 pax

Open Ended - 80 pax

Banquet - 110 pax

Cocktail - 150 pax

# CONFERENCE ROOMS

For a quiet and secluded meeting room with no distractions, look no further than the Retreat Room.

Located on the second level of the Musgrave building, it's perfect for meetings of small to medium size and features windows that allow for magnificent natural lighting.

## RETREAT ROOM



Room Size: 48m<sup>2</sup>

Ceiling Height: 2.5m

Capacity:

Classroom - 20 pax

Theatre - 30 pax

U - Shape - 18 pax

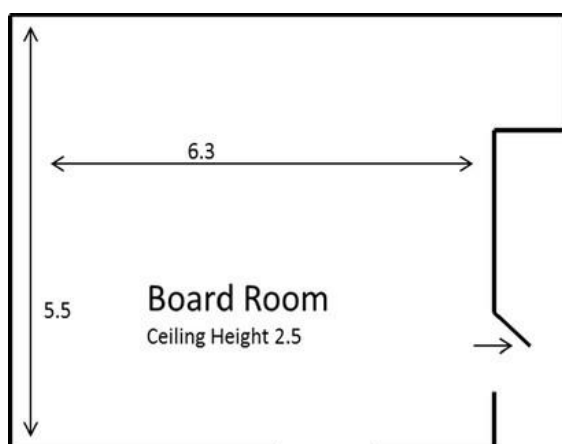
Boardroom - 16 pax

Cocktail - 40 pax

# CONFERENCE ROOMS

Perfect for private executive style meetings, the Boardroom is located on the ground level of the Gardens Restaurant building.

It's intimate, yet professional layout seats up to 10 people and is suitable for small group workshops, think tank sessions, presentations, and interviews.



## BOARDROOM

Room Size: 37m<sup>2</sup>  
Ceiling Height: 2.95m

Capacity:  
Boardroom - 10 pax

## INCLUSIONS:

Room Hire  
Internet Access  
Whiteboard  
Lectern  
Notepads & Pens  
Water & Mints  
Skirted presenter's table  
Power board  
Extension cord  
White table linen  
Tea & Coffee  
available all day  
Function coordinator



## ADDITIONAL EQUIPMENT IF REQUIRED:

Roving Microphone - FOC  
Registration Table - FOC  
Extra Tables - FOC  
Data Projector - FOC  
Laser Pointer - \$25  
Speakers for laptop - \$25  
TV - \$80  
Flip Chart - \$25

*To ensure your event is a success, we have everything you need!*

# INCLUSIONS & EXTRAS

# LIGHT LUNCH CONFERENCE PACKAGE

Full Day Delegate \$65.00pp | Includes Morning Tea, Lunch, Afternoon Tea (up to 8 hours)

Half Day Delegate \$50.00pp | Includes either Lunch plus either Morning Tea or Afternoon Tea (up to 4-hours)

## ON ARRIVAL

- Selection of teas & freshly brewed coffee
- Iced water & mints

## MORNING TEA

Includes a selection of teas and freshly brewed coffee. Your choice of **one gourmet morning tea item** from the list below:

- Seasonal fruit tart
- Chocolate Brownie (V)
- Scones served with jam & cream (V)
- Banana or chocolate muffins (V)
- Yoghurt Musli Cup (V)
- Red velvet & chocolate Yoyo(V)
- Mini ham & cheese croissant
- Homemade mini quiches
- Vegetable frittata (GF)
- Zucchini corn fritters (V)(GF)
- Mini sausage rolls
- Savoury mini muffins (GF/V)

## LIGHT SANDWICH LUNCH

Includes a selection of teas and freshly brewed coffee, juice & soft drinks.

- Creamy egg & lettuce
- Ham, cheese, tomato & sweet mustard pickles
- Tuna, mayonnaise, red onion & spinach
- Chicken, chipotle mayonnaise & lettuce

## AFTERNOON TEA

Includes a selection of teas and freshly brewed coffee. Your choice of **two gourmet afternoon tea items** from the list below:

- Seasonal fruit tart
- Chocolate Brownie (V)
- Scones served with jam & cream (V)
- Banana or chocolate muffins (V)
- Yoghurt Musli Cup (V)
- Red velvet & chocolate Yoyo(V)
- Mini ham & cheese croissant
- Homemade mini quiches
- Vegetable frittata (GF)
- Zucchini corn fritters (V)(GF)
- Mini sausage rolls
- Savoury mini muffins (GF/V)



# PREMIUM LUNCH CONFERENCE PACKAGE

Full Day Delegate \$80.00pp | Includes Morning Tea, Lunch, Afternoon Tea (up to 8 hours)

Half Day Delegate \$65.00pp | Includes either Lunch plus either Morning Tea or Afternoon Tea (up to 4-hours)

## ON ARRIVAL

- Selection of teas & freshly brewed coffee
- Iced water & mints

## MORNING TEA

Includes a selection of teas and freshly brewed coffee. Your choice of **one gourmet morning tea item** from the list below:

- Seasonal fruit tart
- Chocolate Brownie (V)
- Scones served with jam & cream (V)
- Banana or chocolate muffins (V)
- Yoghurt Musli Cup (V)
- Red velvet & chocolate Yoyo(V)
- Mini ham & cheese croissant
- Homemade mini quiches
- Vegetable frittata (GF)
- Zucchini corn fritters (V)(GF)
- Mini sausage rolls
- Savoury mini muffins (GF/V)

## PREMIUM HOT LUNCH

Includes a selection of teas and freshly brewed coffee, juice & soft drinks  
Select **ONE** main option below.

**All** options come with a mixed leaf salad & coleslaw

1. Creamy garlic chicken scallopini, served with rice, roasted chat potatoes
2. Beef lasagna with house salad & garlic bread
3. Vegetable lasagna with house salad & garlic bread
4. Roasted pork leg with gravy & seasonal steamed vegetables
5. Korean style boneless chicken served with rice & honey mustard sauce
6. Japanese chicken or beef curry served with rice

## AFTERNOON TEA

Includes a selection of teas and freshly brewed coffee. Your choice of **two gourmet afternoon tea items** from the list below:

- Seasonal fruit tart
- Chocolate Brownie (V)
- Scones served with jam & cream (V)
- Banana or chocolate muffins (V)
- Yoghurt Musli Cup (V)
- Red velvet & chocolate Yoyo(V)
- Mini ham & cheese croissant
- Homemade mini quiches
- Vegetable frittata (GF)
- Zucchini corn fritters (V)(GF)
- Mini sausage rolls
- Savoury mini muffins (GF/V)





# ACCOMMODATION

With 138 hotel rooms & villas, Comfort Inn & Suites Robertson Gardens has something for everyone!

Our Hotel Rooms are the perfect choice for short-stay guests, with easy access to our function rooms and restaurant. Upgraded with modern amenities and furnishings, guests are treated to a clean, comfortable and stylish stay.

For a longer stay, our self-contained villas are perfect. Located at the rear of the property they offer the privacy and comfort of a home away from home.

If you are booking in conjunction with a conference we offer a discounted package rate as well.

Our restaurant opens for breakfast & dinner daily, and the Games Room opens from 4.30pm.

We also have a pool and two BBQ areas to ensure you can relax with any down-time.

Complimentary WIFI & parking is also extended to our guests.





# CONTACT US

FOR FURTHER INFORMATION OR AQUOTE  
FOR YOUR NEXT EVENT!



**Quality**  
HOTEL

FUNCTIONS

07 3875 1999

0417 649 790

[functions@robertsongardens.com.au](mailto:functions@robertsongardens.com.au)

ACCOMMODATION

07 3875 1999

[accom@robertsongardens.com.au](mailto:accom@robertsongardens.com.au)

281 Kessels Road, Nathan QLD 4111